

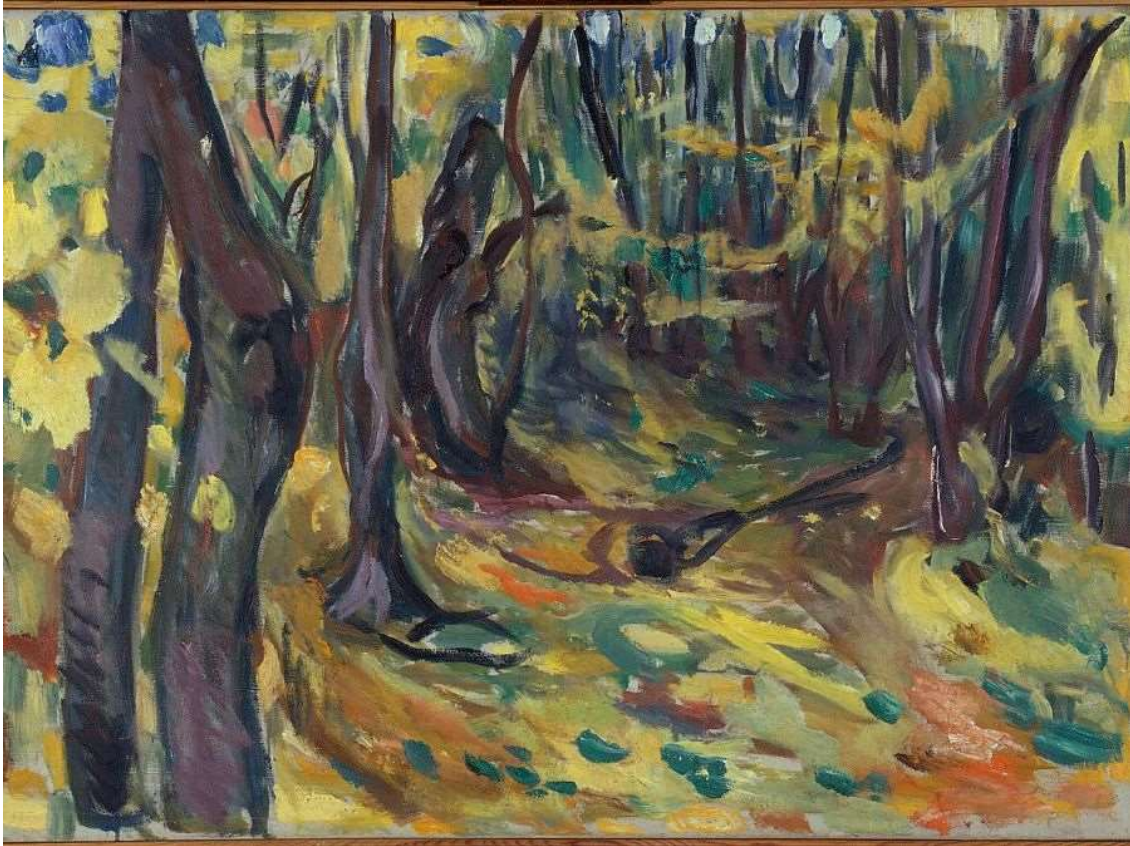
HIVE

north staffs
beekeepers
news &
views

reg charity no:511576

CONTACT

28.09.24



Edvard Munch.....1836 to 1944..... 'Elm Forest In Autumn'

Hello all

We once again move from the verdant greens to the russets and duns of autumn and Edvard Munch's painting, above, is a fine example of that change.

After the poor start to the season my bees rallied late on and still managed to produce a reasonable honey crop. I hope your's did the same. Judging by the late flurry of activity with the Association's honey extractor I would guess this was the case. So you must come to the all new Honey Show and show us what your bees have produced.

Yes, our Honey Show is back and our Managers Jenny and Mike Birks have been extra

busy making the necessary arrangements to ensure everything is in place. Its open judging so our Honey Judge Terry Ashley will be explaining what he is looking for as he makes his choices.

All we now need is plenty of entries and this is down to you!

The links to the Honey show schedule and the Honey show rules are included in this newsletter below or you can find them on our website along with the entry form.

Alternatively you can turn up and register your entry on the night.

Hope to see you all there.

Brian.

NSBKA 2024 Honey Show

Wed 02 Oct 2024

NSBKA Honey Show

Doors open at 6:15 pm for entry submissions

Judging starts 7:30 pm

At Quaker Meeting House

2 Miller St, Newcastle-under-Lyme,
ST5 1QJ

Raffle donations would be greatly appreciated



[Honey Show schedule 2024](#)

[Honey Show Rules](#)

Some tips to help with your Honey Show entries

- Read the Show schedule very carefully and decide which classes you can enter.
- If you have never won a first prize in a Honey Show then you can enter Class 1 in addition to any other classes.
- If you have 4 jars of the same honey you can enter 2 in Class 1 and 2 in another class depending on the colour. You can use the association grading glasses to determine the category....these will be available on the evening of the show.
- All honey will need to be in standard honey jars, if you have not bought any via the NSBKA then see if a member will sell you a few.
- You need 2 identical jars of honey for most classes.
- Your honey will be judged on both taste and presentation, check your jar and lid are clean and your honey free of debris.

- You only need one jar for the 'Black Jar' class. It is judged on taste alone so the jar will need to be painted black or covered neatly in masking tape.
- The jar labels to identify your honey will be provided at the Show.
- If haven't got any honey this year - try to put entries in the other categories such as Mead, Frame of honey ready for extraction, the cookery, handicraft or equipment classes.
- You may enter as many classes as you like there is no charge for entries.
- The more classes you enter, the more chance you have of gaining points.
- More points may mean you win Cups or Prize money.
- Our new cup will be awarded for the most points in all the classes.

Please ring or ask for help / advice if you need it.

Mike and Jenny .07817 665339

MET OFFICE CLIMATE SUMMARIES PAGE

Overview of weather across the UK for previous months, seasons and years

<https://www.metoffice.gov.uk/research/climate/maps-and-data/summaries/index>



Our Library will be open

Our library has an excellent stock of the latest beekeeping books and it will be open for the duration of the Honey Show. If you can't see a particular book you are after; speak with Rachel our librarian

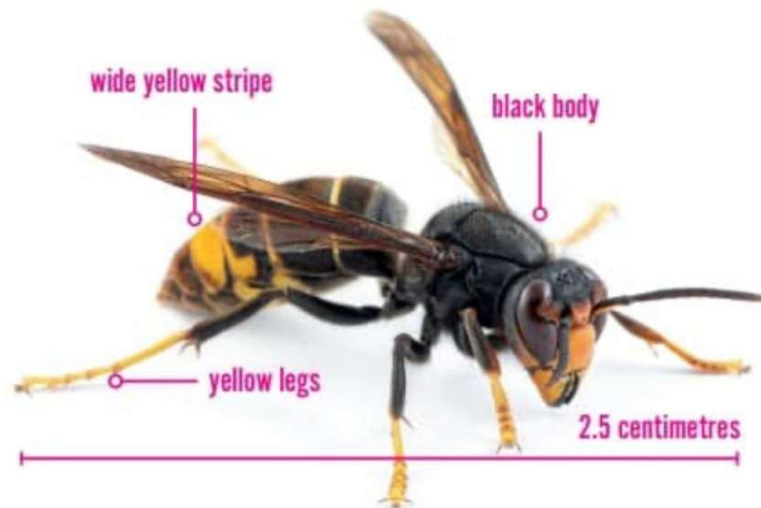
With the season coming to an end this is a good time to loan a book.

remember your returns





Spot **Asian hornets** and save our bees!



Massive Asian Hornet nest found in Southampton

<https://www.bbc.co.uk/programmes/p0jsnxns>

You may need to subscribe to BBC Sounds to listen to this.



Copyright © 2024 northstaffsbees@gmail.com, All rights reserved.
You are receiving this email as a member of North Staffs Beekeepers

Our mailing address is:

northstaffsbees@gmail.com

147

Armshead Road

Werrington, ST9 0EL

United Kingdom

[Add us to your address book](#)

Want to change how you receive these emails?
You can [update your preferences](#) or [unsubscribe from this list](#).

